

Surface Mount Bench w/Backrest

PARTS LIST	BL-SM-6BR	BL-SM-9BR	BL-SM-12BR	BL-SM-15BR	BL-SM-18BR	BL-SM-21BR
BL-SM-BR stringer	2 ea	2 ea	3 ea	3 ea	4 ea	5 ea
PLANK HARDWARE						
2"x10" plank (anodized finish)	2 ea	2 ea	2 ea	2 ea	2 ea	2 ea
2"x10" end cap (anodized finish)	4 ea	4 ea	4 ea	4 ea	4 ea	4 ea
retainer clip	8 ea	8 ea	12 ea	12 ea	16 ea	20 ea
5/16" x 1 1/4" carriage bolt MECH GALV	8 ea	8 ea	12 ea	12 ea	16 ea	20 ea
5/16" flange nut MECH GALV	8 ea	8 ea	12 ea	12 ea	16 ea	20 ea
3/16" aluminum pop rivets	8 ea	8 ea	8 ea	8 ea	8 ea	8 ea

TOOLS REQUIRED

Tape measure

Hammer

Cordless drill / hammer drill

1/2" deep socket on ratchet

3/16" metal drill bit

Pop rivet gun

Level

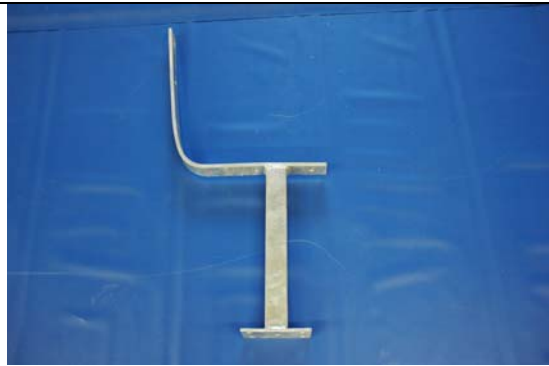


Fig. 1 BL-SM-BR Stringer

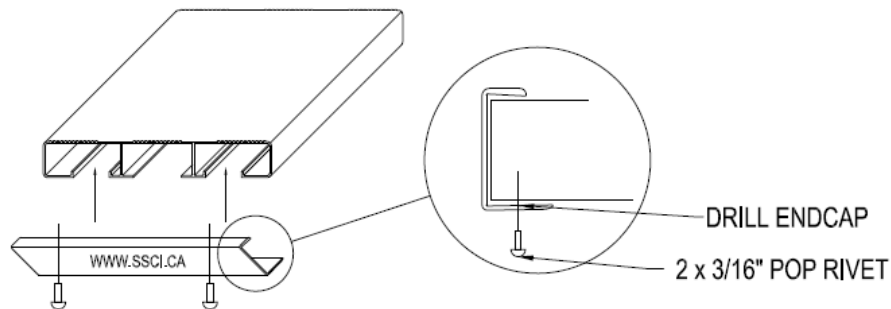


Fig. 2 BL-SM-12BR shown

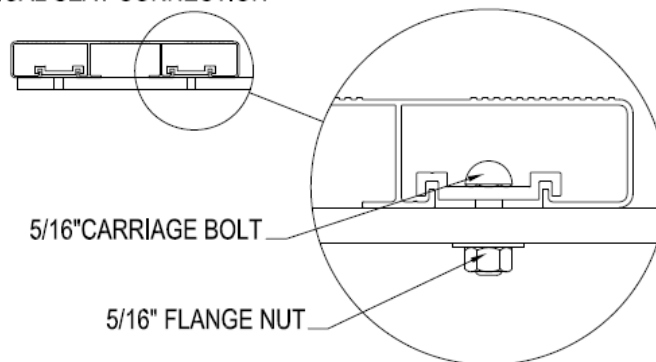
Surface Mount Bench w/Backrest

1. INSTALL THE END CAPS ON THE SEATBOARD AND BACKREST AS PER STEP #2. TURN SEATBOARD AND BACKREST OVER AND MARK THE LOCATIONS OF THE STRINGERS AS PER ATTACHED DRAWINGS. PLACE STRINGERS ON GROUND UPSIDE DOWN. INSTALL THE SEATBOARD AND BACKREST TO THE STRINGER USING RETAINER CLIPS AS PER STEP #3 WHILE ENSURING THAT THE PLANKS ARE SQUARE TO THE FACE OF THE STRINGER. USING A HAMMER DRILL MARK THE HOLE LOCATIONS FOR THE STRINGERS ON THE GROUND AND DRILL. USE APPROPRIATE HARDWARE (SUPPLIED BY OTHERS) TO FASTEN STRINGERS TO SURFACE .

2. SEAT END CAPS



3. TYPICAL SEAT CONNECTION



Surface Mount Bench w/Backrest

IMPORTANT

Sport Systems makes every effort to ensure that its assembly instructions and other printed material are kept up to date. However, written specifications are subject to change without notice.

Installation

Unless Sport Systems has agreed expressly to provide installation services, Buyer is responsible for installing & assembling products. Buyer assumes full responsibility for the proper installation & assembly of products.

Instructions and Warnings

Sport Systems shall have no liability whatsoever for injury, damages, losses and expenses arising as a result of a failure to follow instructions from Sport Systems related to the proper installation, use, care and maintenance of products. Buyer should follow all such instructions, including without limitation:

PRODUCTS SHOULD BE INSPECTED PRIOR TO EACH USE FOR DAMAGE AND DETERIORATION AND SHOULD NOT BE USED IF DAMAGED OR DETERIORATED.
PRODUCTS SHOULD NOT BE USED BY PARTICIPANTS WITHOUT PROPER TRAINING AND SUPERVISION.

Building Codes

These bleachers are designed in accordance with both the NBC 2005 (National Building Code of Canada) and the OBC 2006 (Ontario Building Code). The buyer remains responsible for compliance with any other local or jurisdictional codes. Drawings stamped by a registered professional engineer are not included unless noted in the associated quote or invoice. Please consult with local code officials to determine any additional features which may be desired or required. Official interpretation and application rests solely with local authorities. Sport Systems Canada Inc. and its representatives cannot assume liability for code compliance and presents this information as unofficial guidelines only.